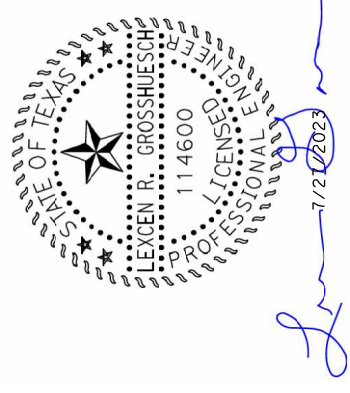
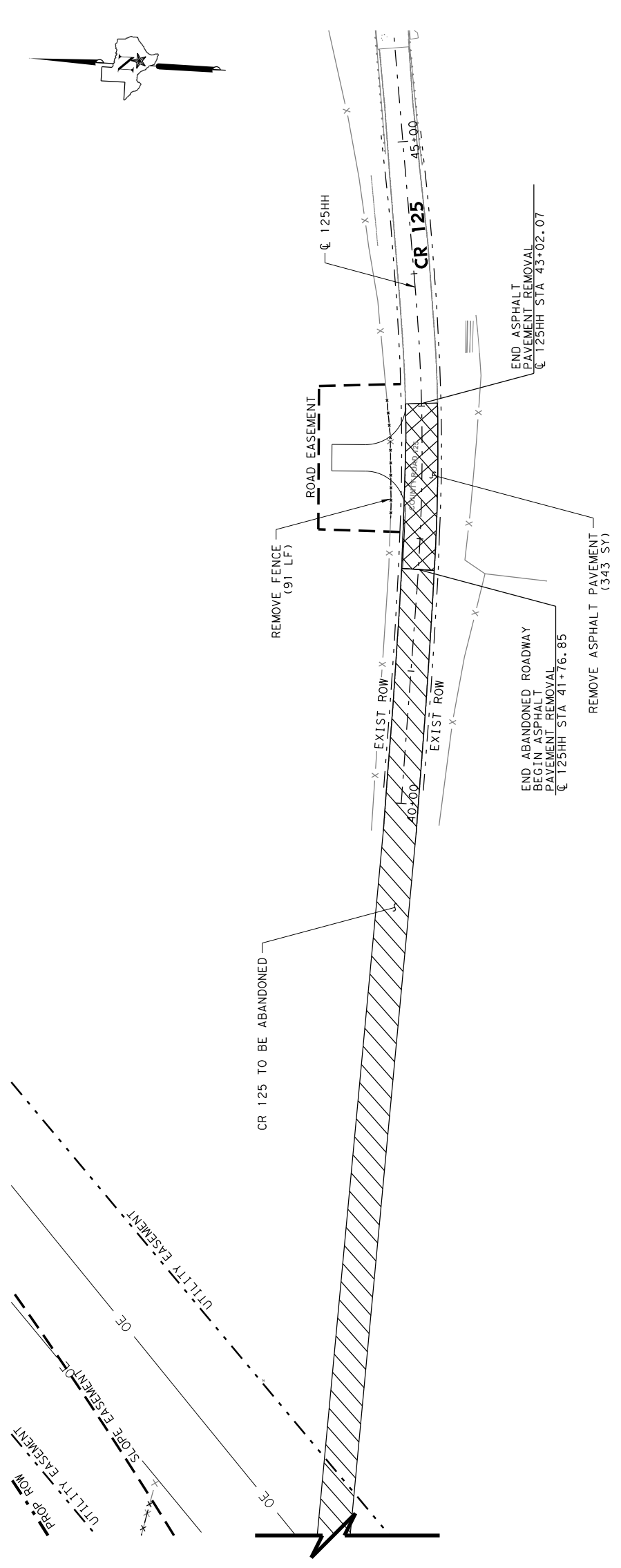
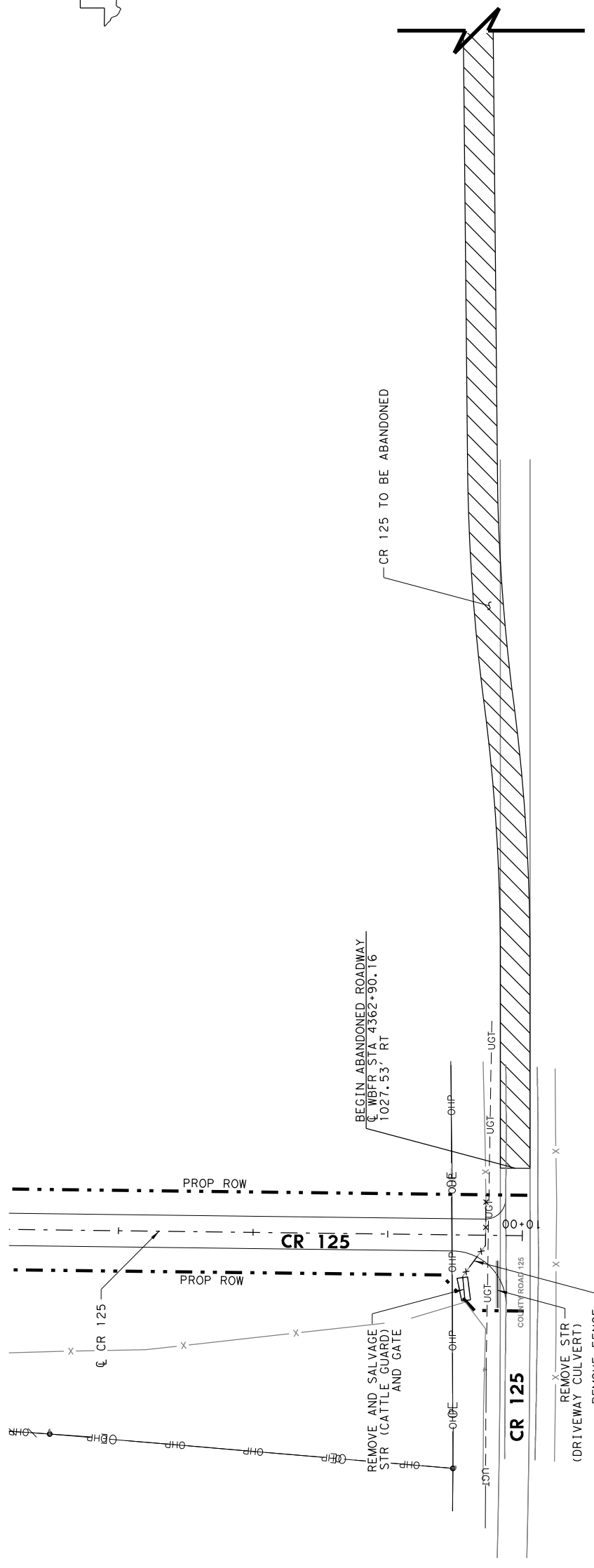


LEGEND

- REMOVE ASPHALT PAVEMENT
- OBLITERATE ABANDONED ROADWAY
- REMOVE GRAVEL
- ABANDON ROADWAY
- REMOVE TREES/SHRUBS
- REMOVE POND
- REMOVE FENCE

NOTES:

1. REMOVAL OF GRAVEL ROADWAY AND GRAVEL DRIVEWAYS ARE SUBSIDIARY TO ITEM 100, PREP ROW.
2. REMOVAL OF GATES IS SUBSIDIARY TO ITEM 496, REMOVING STRUCTURES.
3. ALL TREES AND SHRUBS SHALL BE REMOVED FROM ENTIRE ROW, AND SHALL BE CONSIDERED SUBSIDIARY TO ITEM 100, PREP ROW.
4. REMOVAL OF TEMP DETOUR IS SUBSIDIARY TO ITEM 508, CONSTRUCTING DETOUR.
5. REMOVAL OF ROADWAY SMALL SIGNS ARE SUBSIDIARY TO ITEM 100, PREP ROW.
6. REMOVAL OF MAILBOXES ARE SUBSIDIARY TO ITEM 560, MAILBOX INSTALL.
7. REMOVAL OF PONDS ARE SUBSIDIARY TO ITEM 110, EXCAVATION.



DATE	BY	REVISION

COLLIN COUNTY
TOLL ROAD AUTHORITY

**COLLIN COUNTY
OUTER LOOP SEGMENT 3C
REMOVAL PLAN
CR 125**

CR 125 & CR 125 TURN AROUND

SCALE: 1" = 100'

SHEET 1 OF 1

BGE Inc.
2695 Dallas Parkway, Suite 101, Frisco, TX 75034
Tel: 972-464-4800 • www.bgeinc.com
TBPE Registration No. F-1046 Copyright: 2023

BOND PROJECT NO. B1180L002 SHEET NO. 117Z