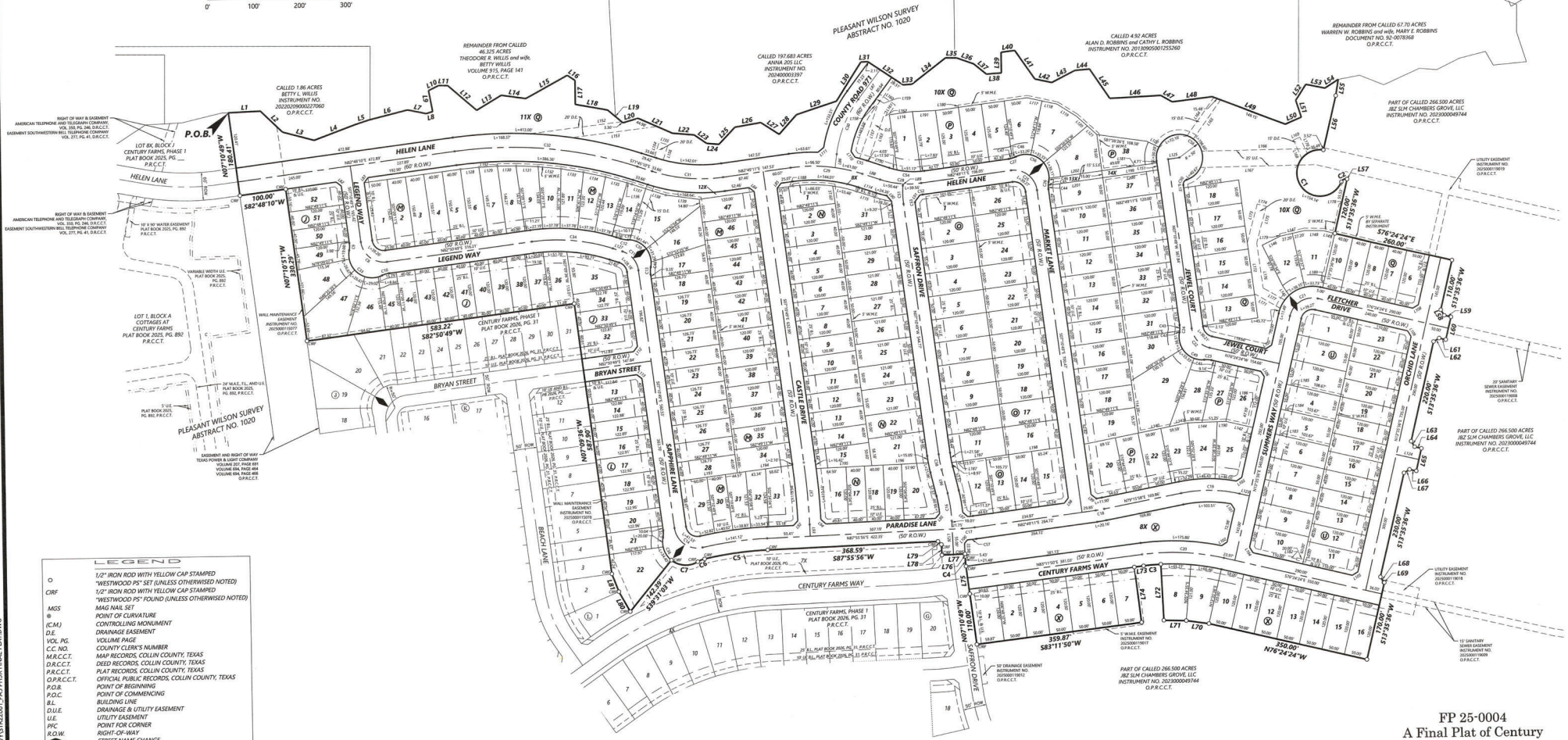
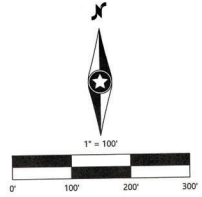
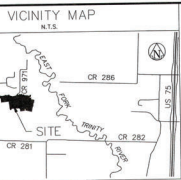


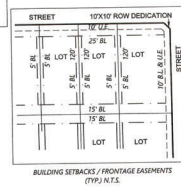
© 2024 Westwood Professional Services, Inc. N:\PLS\GIS\DRIVE\JOB\17522001\CHAMBERS GROVE\23\SRVY\17522001\JMS\FINAL\PLAT.DWG



LEGEND

- 1/2" IRON ROD WITH YELLOW CAP STAMPED
- "WESTWOOD PS" SET (UNLESS OTHERWISE NOTED)
- 1/2" IRON ROD WITH YELLOW CAP STAMPED
- "WESTWOOD PS" FOUND (UNLESS OTHERWISE NOTED)
- MCS MAGN. NAIL SET
- (C.M.) POINT OF CURVATURE
- D.E. CONTROLLING MONUMENT
- D.E. DRAINAGE EASEMENT
- VOL. PG. VOLUME PAGE
- C.C. NO. COUNTY CLERK'S NUMBER
- M.A.R.C.C.T. MAP RECORDS, COLLIN COUNTY, TEXAS
- D.A.R.C.C.T. DEED RECORDS, COLLIN COUNTY, TEXAS
- P.R.C.C.T. PLAT RECORDS, COLLIN COUNTY, TEXAS
- O.P.R.C.C.T. OFFICIAL PUBLIC RECORDS, COLLIN COUNTY, TEXAS
- P.O.B. POINT OF BEGINNING
- P.O.C. POINT OF COMMENCING
- B.L. BUILDING LINE
- D.U.E. DRAINAGE & UTILITY EASEMENT
- U.E. UTILITY EASEMENT
- P.C. POINT FOR CORNER
- R.O.W. RIGHT-OF-WAY
- ◄ STREET NAME CHANGE
- W.M.E. WALL, MAINTENANCE EASEMENT
- M.A.E. MAINTENANCE AND ACCESS EASEMENT
- F.L. FIRE LANE
- P.B. PLAT BOOK

- SURVEYOR NOTES:**
- COORDINATES SHOWN ARE TEXAS STATE PLANE COORDINATE SYSTEM, NORTH CENTRAL ZONE, NORTH AMERICAN DATUM OF 1983, GRS GRID COORDINATE VALUES, NO SCALE AND NO PROJECTION.
 - ALL INTERIOR LOT CORNERS ARE MONUMENTED WITH A 1/2 INCH IRON ROD SET WITH A YELLOW PLASTIC CAP STAMPED "WESTWOOD PS" UNLESS OTHERWISE NOTED.
 - BEARING SYSTEM FOR THIS SURVEY IS BASED ON GRID NORTH STATE PLANE COORDINATES OF THE TEXAS COORDINATE SYSTEM NAD83 (10C958) TEXAS NORTH CENTRAL ZONE, NAD83, NAVD83.
 - SKELING A PORTION OF THIS ADDITION BY METES AND BOUNDS IS A VIOLATION OF CITY ORDINANCE AND STATE LAW AND IS SUBJECT TO FINES AND WITHDRAWING OF UTILITY AND BUILDING PERMITS.



STATE OF TEXAS, COUNTY OF COLLIN
 I, **WILLIAM J. WILSON**, COUNTY CLERK OF COLLIN COUNTY,
 DO HEREBY CERTIFY THAT THIS PLAT HAS FILED FOR RECORD IN
 MY OFFICE AND IS IN FULL COMPLIANCE WITH THE PLAT RECORDS
 ACT OF COLLIN COUNTY ON 02/09/2024 01:58 PM
 PLAT BOOK 2024 PAGE 11-7. THIS IS THE
 NUMBER OF PAGES, 9 MONTHS
 IN TESTIMONY WHEREOF, I HAVE SET
 MY HAND AND OFFICIAL SEAL OF OFFICE,
 COUNTY CLERK, COLLIN COUNTY, TEXAS
 FEB 9 2024

Westwood
 ENGINEER / SURVEYOR
 2901 DALLAS PKWY, STE 400
 PLANO, TX 75083
 (972) 473-6860
 westwood.com

FP 25-0004
A Final Plat of Century Farms Phase 3

LOTS 32-52, BLOCK J; LOTS 13-22, BLOCK L;
 LOTS 1-47, LOT 12X, BLOCK M; LOTS 1-31, LOT 8X, BLOCK N;
 LOTS 1-26, BLOCK O; LOTS 1-38, 13X-14X, BLOCK P;
 LOTS 6-18, 10X-11X, BLOCK Q; LOTS 1-23, BLOCK U;
 AND LOTS 1-16, 8X, BLOCK X;
 225 RESIDENTIAL LOTS
 7 OPEN SPACE COMMON AREAS 7.555 ACRES
 AND RIGHT OF WAY DEDICATION 12.02 ACRES
 TOTALING 49.701 ACRES
 SITUATED IN THE
 PLEASANT WILSON SURVEY, ABSTRACT NO. 1020
 CITY OF ANNA, ETJ
 COLLIN COUNTY, TEXAS
 49.701 ACRES JANUARY 2026 CENTURY FARMS PHASE 3